



# MONTHLY MEMBERSHIP PROGRESS REPORT

District 105 M

Results as of: 05/31/2019

GMT: JOOST PAIJMANS

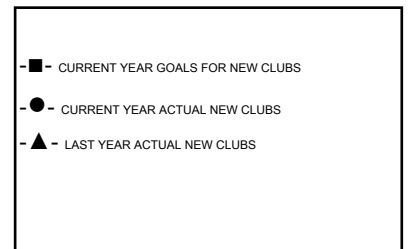
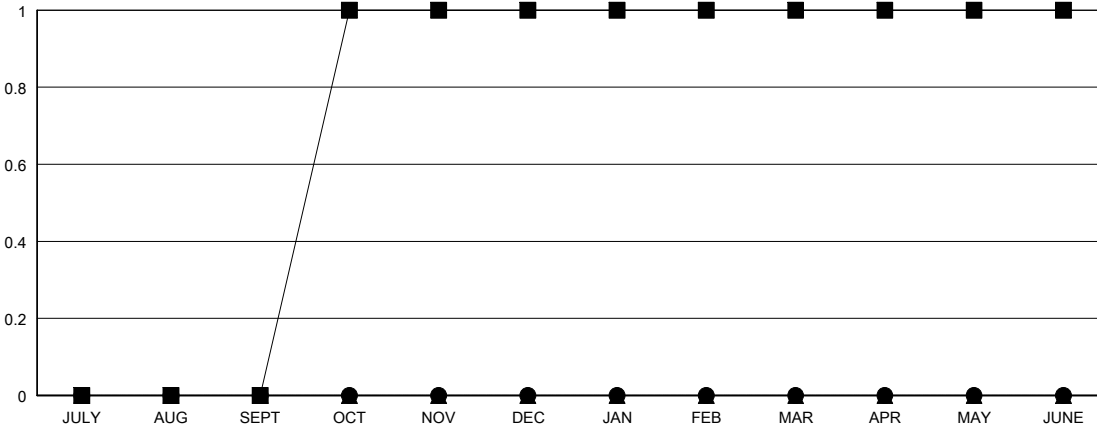
LOCATION ENGLAND

GMT CA

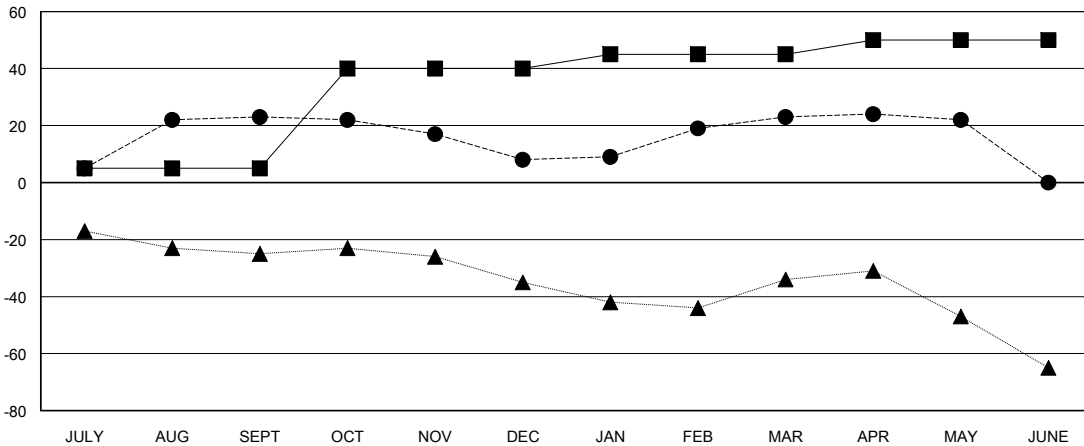
Clubs			
RESULTS FOR 2018-2019			
QUARTER	NEW CLUB GOAL	NEW CLUBS	DROPPED CLUBS
JULY/AUG/SEPT	0	0	0
OCT/NOV/DEC	1	0	0
JAN/FEB/MAR	0	0	0
APR/MAY/JUNE	0	0	0

Members			
RESULTS FOR 2018-2019			
QUARTER	MEMBER GROWTH NET GOAL	MEMBER GROWTH ACTUAL	DROPPED MEMBERS ACTUAL (including transfers)
JULY/AUG/SEPT	5	36	10
OCT/NOV/DEC	35	17	29
JAN/FEB/MAR	5	31	12
APR/MAY/JUNE	5	16	14

GOALS AND ACTUAL NEW CLUBS CUMULATIVE



GOALS AND ACTUAL MEMBERS CUMULATIVE



DROPPED CLUBS: 0
------------------

32 CLUBS OF 51 ADDED 1 OR MORE NEW MEMBERS

GENDER DISTRIBUTION	
MALE	692 (74.17%)
FEMALE	241 (25.83%)
Women Percentage Fiscal Year Goal: 30%	

DROPPED MEMBERS	
DECEASED	8
CLUB CANCELLED	0
OTHER	57
<b>TOTAL</b>	<b>65</b>

[CLICK HERE FOR CUMULATIVE MEMBERSHIP DATA](#)

TOTAL FAMILY UNIT MEMBERS	89
FAMILY MEMBERS PAYING HALF DUES	45